



Virgin Islands Shipping Registry

Ritter House, PO Box 4751, Wickham's Cay II, Tortola, British Virgin Islands, VG1110

Tel: +1 284 393 0000

Website: www.bvmaritime.vg

• Duty Officer: +1 284 346 8596

• General Email: vishipping@bvmaritime.vg

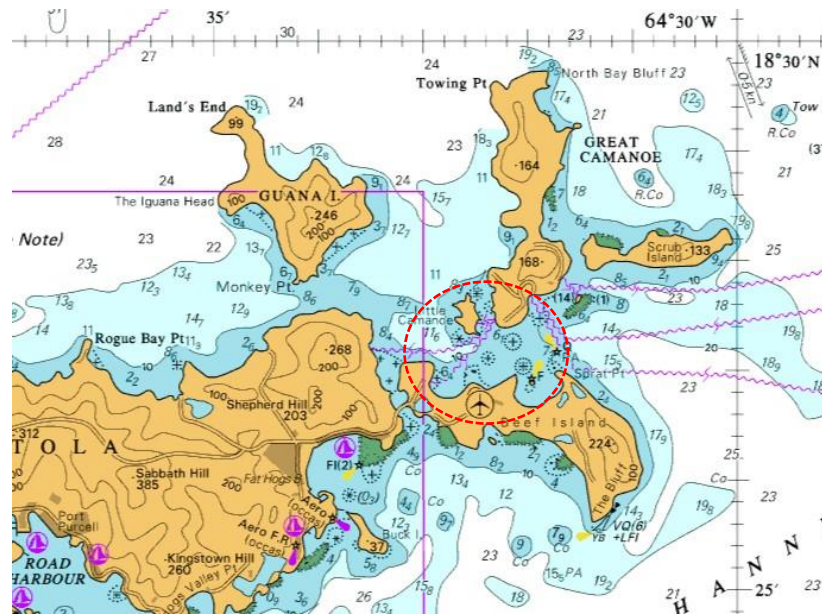
NAVIGATIONAL WARNING

NOTICE TO MARINERS No.02 - 2024

OWNERS, MANAGERS, OPERATORS, SKIPPERS AND MASTERS OF ALL VESSELS PASSING SOUTH OF LITTLE & GREAT CAMANOE ISLANDS AND NORTH OF BEEF ISLAND; IN THE VICINITY OF LONG BAY BEACH; AND OPERATING IN WATERS OF LONG BAY, CONCH BAY AND TRELIS BAY.

REFERENCE: **NORTH CARDINAL BUOY LIGHT EXTINGUISHED.**

LOCATION: **LONG BAY, NORTH BEEF ISLAND; SOUTH OFF LITTLE CAMANOE ISLAND**



The North Cardinal Buoy (Q. Fl) situated in Lat:18° 27.194'N & Long: 064° 32.365'W, marking submerged dangerous rocks in the vicinity of Long Bay, Beef Island North and South off Little Camanoe Island; has been reported **extinguished**.

Mariners are advised to exercise extreme caution, keeping a sharp lookout using all available means, when navigating in the waters North of Beef Island, and passing between Little & Great Camanoe Islands and Beef Island, in the vicinity of Long Bay, Conch Bay and Trellis Bay.

Vessels without operational radar should avoid sailing in the above denoted waters during hours of night and in periods of restricted visibility.

This notice has been issued in accordance with section 163 of the Merchant Shipping Act, 2001.

Mr. John Samuel
Director of Shipping
Virgin Islands Shipping Registry
Ritter House
Wickham's Cay II, Tortola
British Virgin Islands VG 1110