



Virgin Islands Shipping Registry

Ritter House, PO Box 4751, Wickham's Cay II, Tortola, British Virgin Islands, VG1110

Tel: +1 284 393 0000 • Duty Officer: +1 284 346 8596

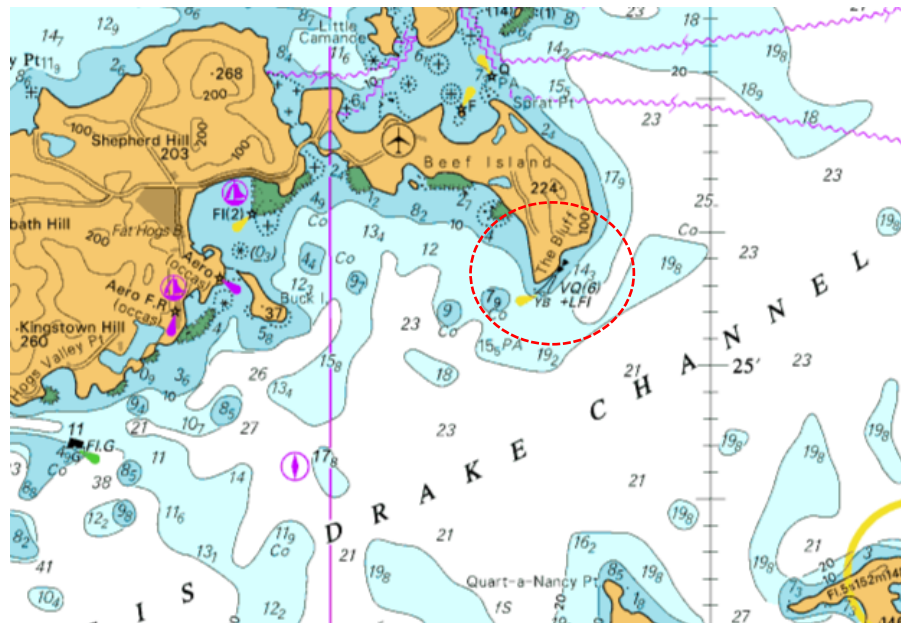
Website: www.bvimaritime.vg • General Email: vishipping@bvimaritime.vg

NAVIGATIONAL WARNING **NOTICE TO MARINERS No.03 - 2024**

OWNERS, MANAGERS, OPERATORS, SKIPPERS AND MASTERS OF ALL VESSELS IN THE VICINITY OF THE BLUFF, BEEF ISLAND; TRANSITTING SIR FRANCIS DRAKE CHANNEL, SOUTH OF BEEF ISLAND

REFERENCE: SOUTH CARDINAL BUOY IS NOT ON STATION

LOCATION: THE BLUFF, SIR FRANCIS DRAKE CHANNEL



The Beef Island Bluff South Cardinal Buoy VQ6 + LFI (Lat:18° 25.539'N Long: 064° 31.322'W) has suffered severe damage to its base pontoon.

The marker has been removed from its location for immediate repairs.

Mariners transiting Sir Francis Drake Channel, passing south of The Beef Island Bluff, are required to maintain safe distance keeping well clear south of The Bluff; must maintain a sharp lookout, exercising extreme caution in the vicinity of the Bluff, particularly during periods of restricted visibility, and at nighttime.

This notice has been issued in accordance with section 163 of the Merchant Shipping Act, 2001.

Mr. John Samuel
Director of Shipping
Virgin Islands Shipping Registry
Ritter House
Wickham's Cay II, Tortola
British Virgin Islands VG 1110

28-July-2024